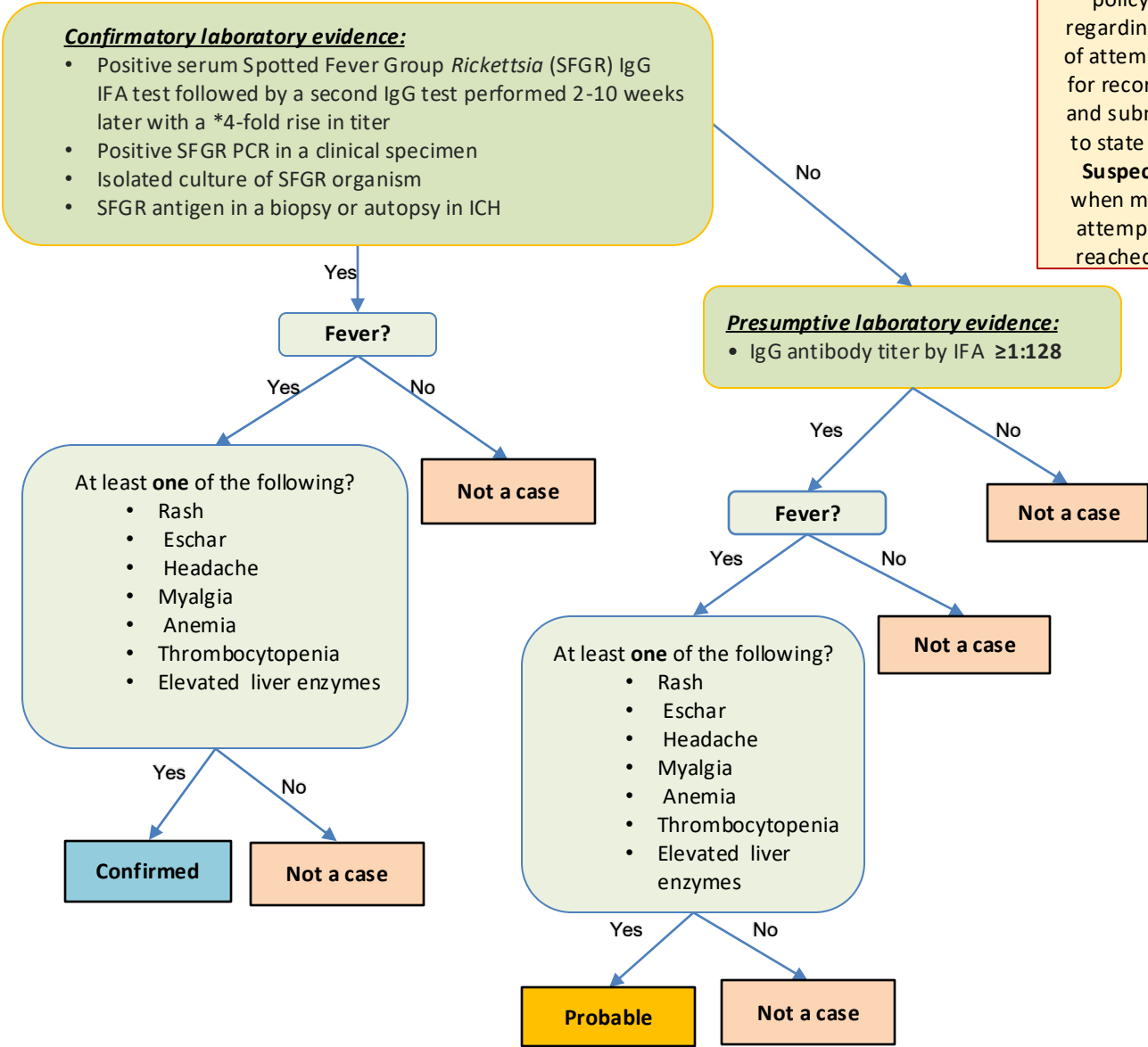


North Carolina Spotted Fever Rickettsiosis Algorithm

Refer to [NC CD Manual](#) for detailed information

Always follow your CD investigation policy regarding # of attempts for records and submit to state as **Suspect** when max attempts reached.



Helpful Tips:

- A single IgG titer of 1:64 or a positive IgM alone does not meet laboratory criteria and does not require investigation.
- Symptom onset date is important, collection date for presumptive laboratory evidence **MUST** be within 60 days of symptom onset – if symptom onset is > 60 days prior, then not a case.
- Fever remains a required element for SFR case definition.
- *A four-fold rise in titer is equivalent to a change of two dilutions (e.g., 1:64 to 1:256)