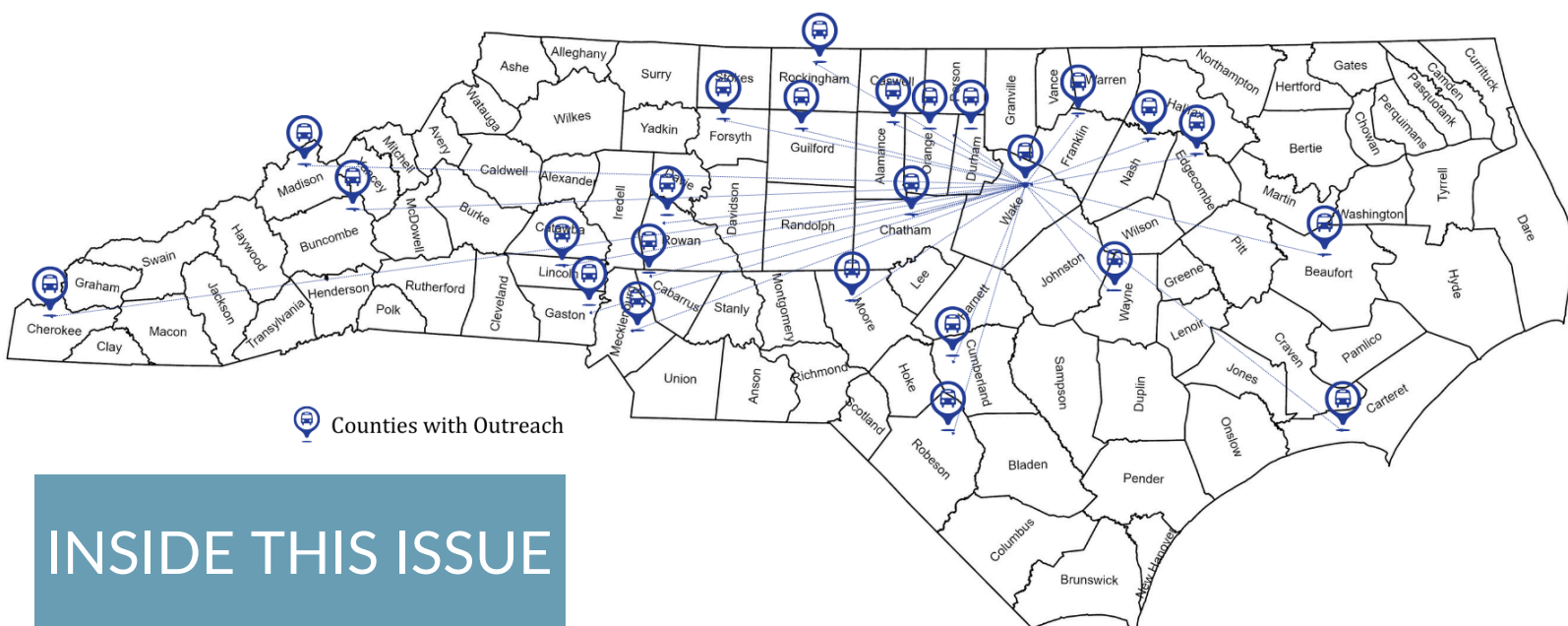


CONNECTING ACROSS NORTH CAROLINA TO BUILD HEALTHIER COMMUNITIES

Environmental health data in action — protecting health where people live, work, and play.



INSIDE THIS ISSUE

[NC Fish Consumption Advisories StoryMap](#) [Page 2](#)

[Private Well Water StoryMap](#) [Page 3](#)

[Community Engagement](#) [Page 4](#)

[Presentations](#) [Page 5](#)

[Environmental Health Data Dashboard Updates](#) [Page 6](#)

[Your Feedback Matters!](#) [Page 7](#)

SUMMER SPOTLIGHT: 21+ NC COUNTIES REACHED

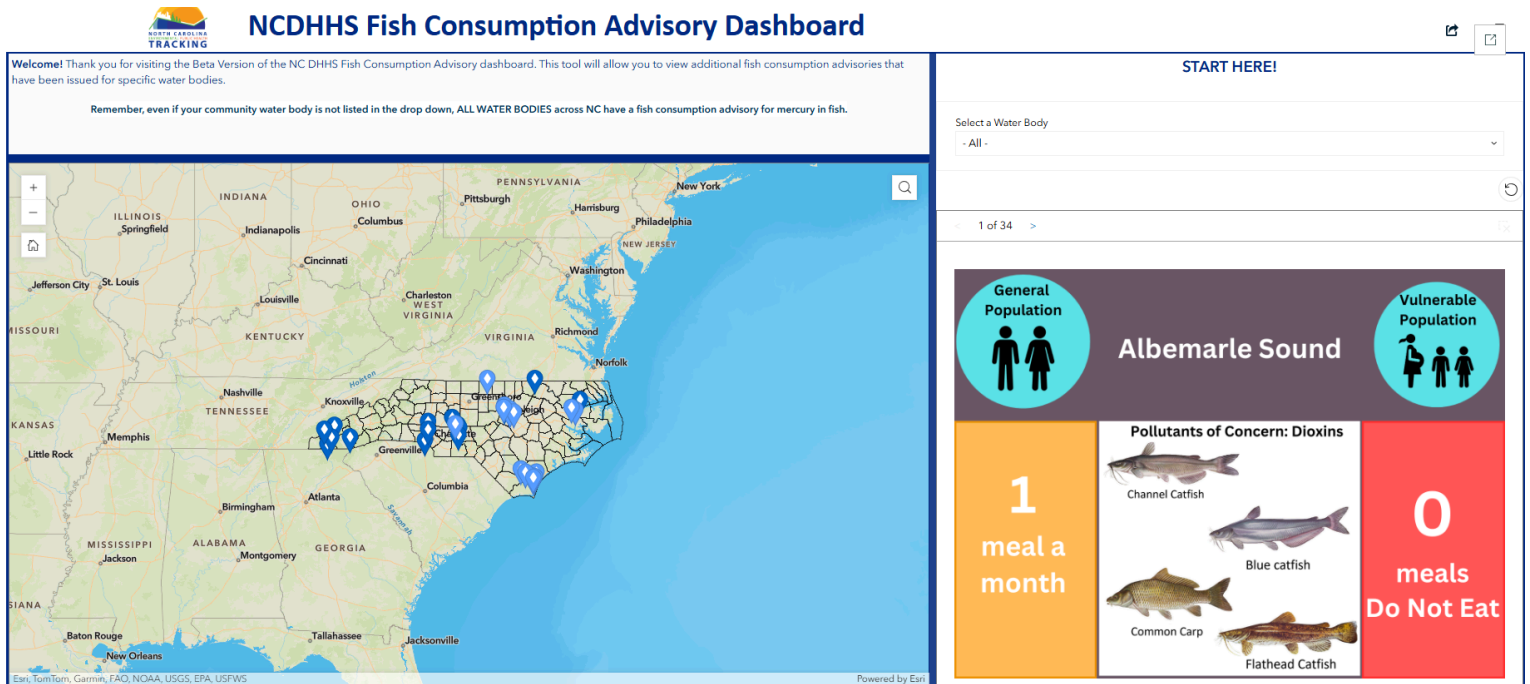
This issue highlights how the NC Environmental Public Health Tracking Program is connecting across the state — delivering new tools, promoting safer water, and helping communities strengthen public health through data.



See the map above to track where we've been — from attending Community Health Assessment (CHA) Institutes to distributing water filters, our outreach continues to grow.



NC Fish Consumption Advisories StoryMap



We developed a new interactive [Fish Consumption Advisories StoryMap](#) to help North Carolinians make informed choices about locally caught fish.

This easy-to-use tool allows you to explore and learn more about:

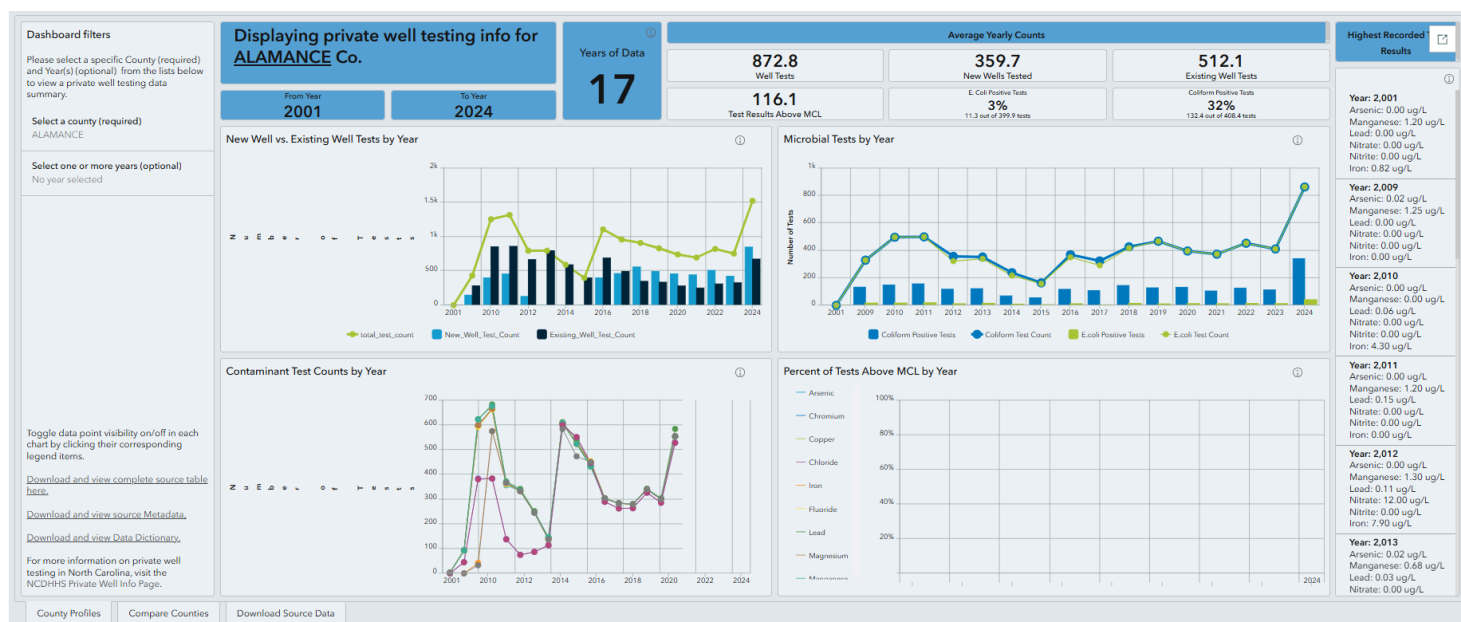
- Benefits of fish consumption.
- Water body-specific fish consumption advisories.
- Components of fish consumption advisories.
- Fish identification.
- Common pollutants of concern and their potential health impacts.



Explore the Tool→



Private Well Water StoryMap



We launched a new interactive [Private Well Water StoryMap](#) that includes NCDHHS private well water quality data by county from 2008-present. This is the first time this data has been made publicly available from NCDHHS!

Unlike public water systems that are tested regularly, private wells must be tested by property owners. The StoryMap provides a single place to find guidance, connect with testing resources, and explore county-level results to help make informed decisions about water safety. This tool can be utilized by residents, local health departments, and community organizations to find resources and data related to private well testing.

This easy-to-use tool allows you to:

- Learn why private well testing matters and how it helps protect your health.
- Find your local health department and certified water testing resources.
- Understand which private wells may never have been tested.
- View and download existing county-level well testing data from the NC State Lab of Public Health.



Explore the Tool→



Community Engagement

Environmental Health in Community Health Assessments (CHAs)

At the Spring 2025 CHA Institute in Raleigh, our team promoted three key environmental health resources developed to support local health departments:

- Environmental Health Quality Toolkit
- Data Visualization Technical Assistance
- Community engagement guidance for CHAs



Dr. Faye Koenigmark, GIS Analyst, shared these new resources alongside the NC Conservation Network and spoke with local health departments about integrating environmental health into planning and reporting.

Water Filter Distribution Initiative



At the drop-off location for the Occaneechi Band of the Saponi Nation, we delivered 350 water pitchers and filters to support access to safer drinking water.

This year, we began distributing water pitchers and filters to private well users in communities with limited access to safe drinking water. These filters remove over 365 contaminants including PFAS, lead, and agricultural run off.

To support this initiative, we are also:

- Creating plain-language fact sheets.
- Partnering with local organizations to deliver both the filters and educational materials.

This work ensures that residents have the tools and knowledge they need to protect their health at home.

Presentations



We gave a presentation titled “Tools for Including Environmental Health in Local Community Health Assessments” at this year’s Council of State and Territorial Epidemiologists (CSTE) 2025 Annual Conference.

CSTE’s Annual Conference brings together public health epidemiologists across the United States to share their expertise and best practices in surveillance and epidemiology on a broad range of topics, including environmental health.

We highlighted how environmental tracking tools are used to identify and address community-level risks across North Carolina.



Dr. Faye Koenigsmark (center) presented Tools for Including Environmental Health in Local Community Health Assessments at the CSTE 2025 Annual Conference, joined by colleagues Sarah Christian (left) and Dr. Virginia Guidry (right).

Dr. Faye Koenigsmark shared how we are helping local health departments (LHDs) incorporate environmental health into their Community Health Assessments (CHAs).

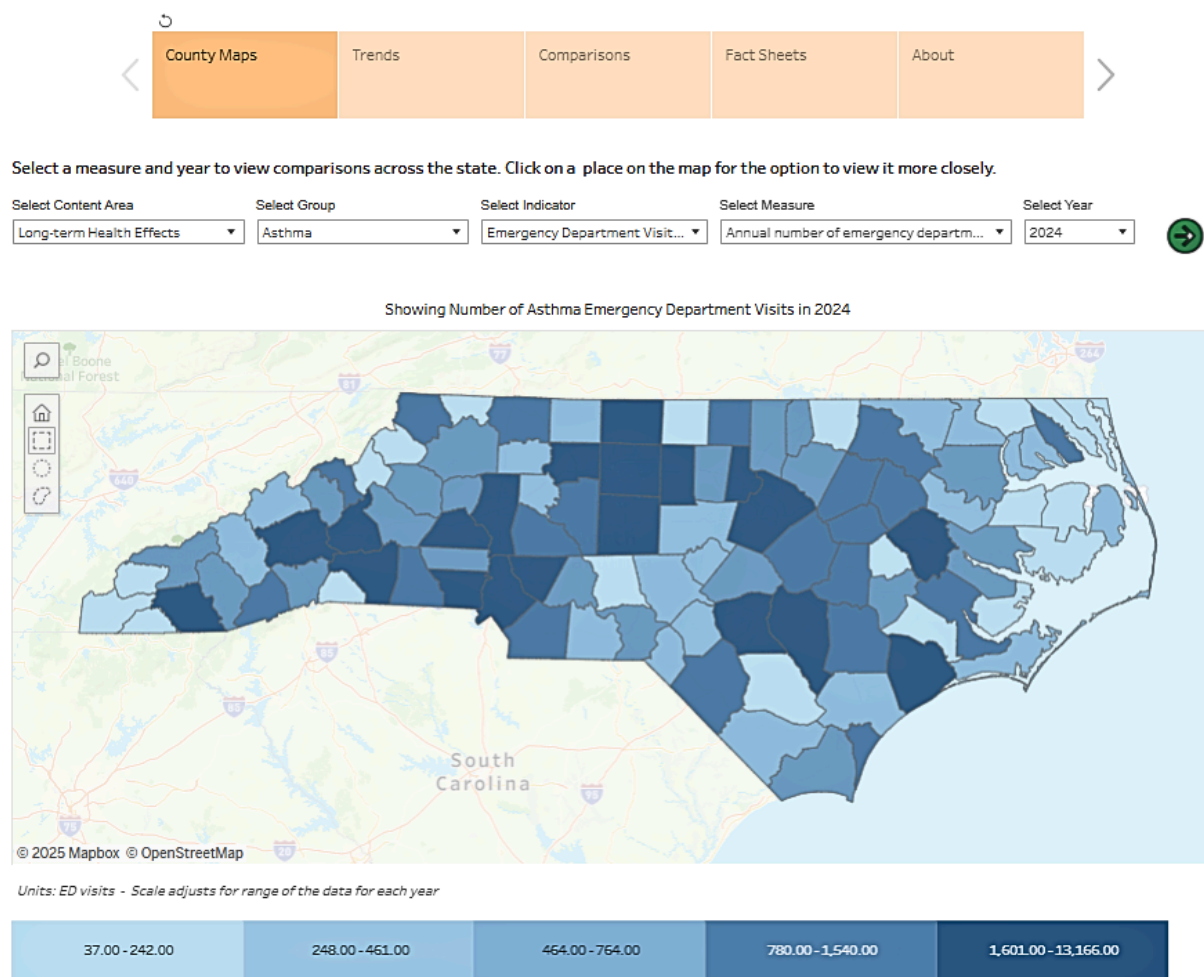
The presentation highlighted our mission to empower communities through data, technical assistance, and partnerships — with a goal of increasing the number of CHAs in North Carolina that address disproportionate environmental health impacts from one in 2022 to at least eight in 2025.



Why Does This Matter?





Environmental health risks often go unseen, but tracking tools help highlight exposure patterns that impact policy, planning, and prevention.

Environmental Health Data Dashboard Updates




What's New

Data Additions:

-  **Hospitalizations:** Added counts and rates for years 2016–2023 for acute myocardial infarction (AMI), asthma, carbon monoxide (CO) poisoning, chronic obstructive pulmonary disorder (COPD), and heat-related illness (HRI).
-  **Emergency department visits:** Updated counts and rates to 2024 for asthma, CO poisoning, COPD, and HRI.
-  **Birth defects:** Updated five-year prevalence to 2020 with the most current year available.
-  **Air quality data for PM2.5 and ground-level ozone:** Changed the data source to display EPA data so that we can provide more current data for PM2.5 and ground-level ozone.

Map Features:

-  **Data download:** Added feature to download aggregated data behind the data visualizations.

Your Feedback Matters!



Use the QR code below to provide your feedback on the [EHDD](#). We need your input to learn how we can improve our dashboard!

Scan here to offer feedback:



Stay Connected, Stay Informed

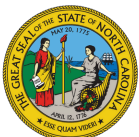
As we continue our journey together, we invite you to stay connected and engaged. Explore our improved website, and reach out to us with any suggestions, questions, or opportunities to collaborate.

Together we can provide data and context to inform data-driven policies, funding, and solutions to build a healthier environment for all North Carolinians.

Best regards,
The NCEPHT Team

Empowering Communities, Informing Decisions

Email: ncepht_support@dhhs.nc.gov | Social Media: [Facebook](#), [Instagram](#)



NC DEPARTMENT OF
**HEALTH AND
HUMAN SERVICES**
Division of Public Health

www.dph.ncdhhs.gov • <https://epi.dph.ncdhhs.gov/oeo/programs/EnvPubHealthTracking.html>
• NCDHHS is an equal opportunity employer and provider • 10/2025

This project was supported by the Centers for Disease Control and Prevention of the U.S. Department of Health and Human Services (HHS) as part of a financial assistance award totaling \$710,000 per year with 100 percent funded by CDC/HHS. The contents are those of the author(s) and do not necessarily represent the official views of, nor an endorsement, by CDC/HHS, or the U.S. Government.