



NC DEPARTMENT OF
HEALTH AND HUMAN SERVICES
Division of Public Health
Office of the Chief Public Health Nurse

LTAT Command Center and Public Health Nursing Preparedness and Response for Lead Nurse Administrators

Jenifer Simone, MSN, RN, CPHN, NCSN

Lead Nurse Public Health Preparedness and Response

June 2025

Learning outcomes

- ▶ Lead Nurse Administrators (LNAs) will gain enhanced knowledge to:
 - ▶ Define LNA roles to strengthen local preparedness and response systems.
 - ▶ Describe shelter types and shelter health models
 - ▶ Identify interagency coordination points between LHDs and the LTATCC/PHP&R disaster response plan.
 - ▶ Describe associated job tools, related training, and available resources.

Agenda

- ▶ Common terms used in Public Health Preparedness and Response
- ▶ Lead Nurse Administrator roles for local emergency preparedness and response
- ▶ Shelter types and shelter health models
- ▶ PHN roles when working in general population shelters
- ▶ Division level support and the Local Technical Assistance and Training Branch Command Center (LTATCC)
- ▶ Resources for training and professional development

PHPR Terms and Definitions

- **EMAC Nurse** - Emergency Management Assistance Compact Nurse. EMAC Nurses can be out-of-state nurses or in-state PHNs deploying to work in disaster shelters
- **Emergency Operations Center**- A protected site from which government officials and emergency response personnel exercise direction and control in an emergency.
- **Event** - Planned event with potential risk to the public's health. Ex. US Open and heat-related illness, political party national convention during a pandemic
- **Incident** - Unplanned event with risk for public health or mass fatality impact. Ex. Pandemic, flooding, hurricane, tornado, nuclear meltdown.
- **Incident Management Team(s) (IMT)** - State teams made up of people with special qualifications and deployed to counties or localities to assist with response to emergencies/disasters.
- **LTATCC** - Local Technical Assistance and Training (Branch) Command Center
- **PHCC** - Public Health Command Center
- **PHNC** - Public Health Nurse Consultant - DPH and DCFW Nurse Consultants
- **PHP&R** - Public Health Preparedness and Response Branch (DPH)
- **Shelter Manager** - An individual who provides for internal organization, administration, and operation of a shelter facility.

Public Health Nursing Eight Roles and Functions



NORTH CAROLINA
Credentialed
Public Health Nurse



NC DEPARTMENT OF
HEALTH AND HUMAN SERVICES
Division of Public Health

Lead Nurse Administrator Roles for Local Emergency Preparedness and Response

- ▶ Collaborate with LHD leaders through all phases of emergency preparedness and response (mitigation, preparedness, response, and recovery).
- ▶ Facilitate interagency coordination between the LHD, emergency services and community partners.
- ▶ Provide input and support for local response drills through the entire process: planning through evaluation to improve operational readiness.
- ▶ Incorporate strategies to support local populations, including at-risk populations.
- ▶ Develop plans to address changes in workforce capacity to maintain continuity of operations during prolonged events.

Shelter Health Support Models in General Population Shelters

Nurse Support Model

EMS Support Model

Hybrid Support Model

Shelters supported by PHP&R and the LTATCC

Local Health Department General
Population Shelters

State Operated General Population
Shelters

State Medical Support Shelters

Initiated, operated and managed by NC OEMS

Staffed by health professionals and ancillary staff recruited by NC OEMS

Typically located outside of the “impact zone”

Public Health Nurse Roles in Disaster Sheltering



Function as critical part of shelter operations management



Surveil for illness and communicable disease



Assess and triage shelter resident population



Implement infection control, quarantine, and isolation of suspected illness



Use critical thinking, nursing process, and crisis management skills



Provide case management for shelter resident population



Use innovative design to fill resource gaps and safeguard a healthy population



Support and maintain shelter residents' whole health

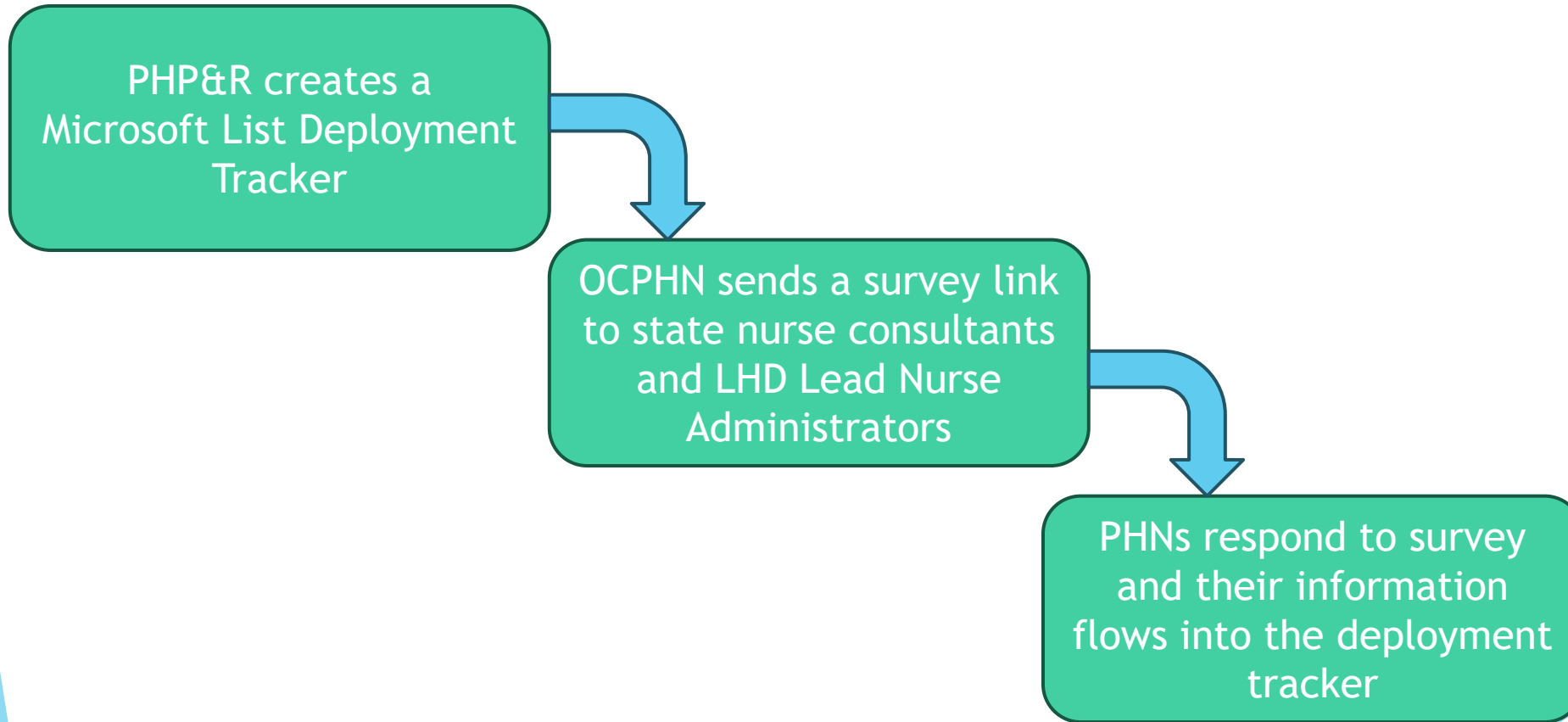
LTATCC Response Plan and Model Overview

LTAT Command Center

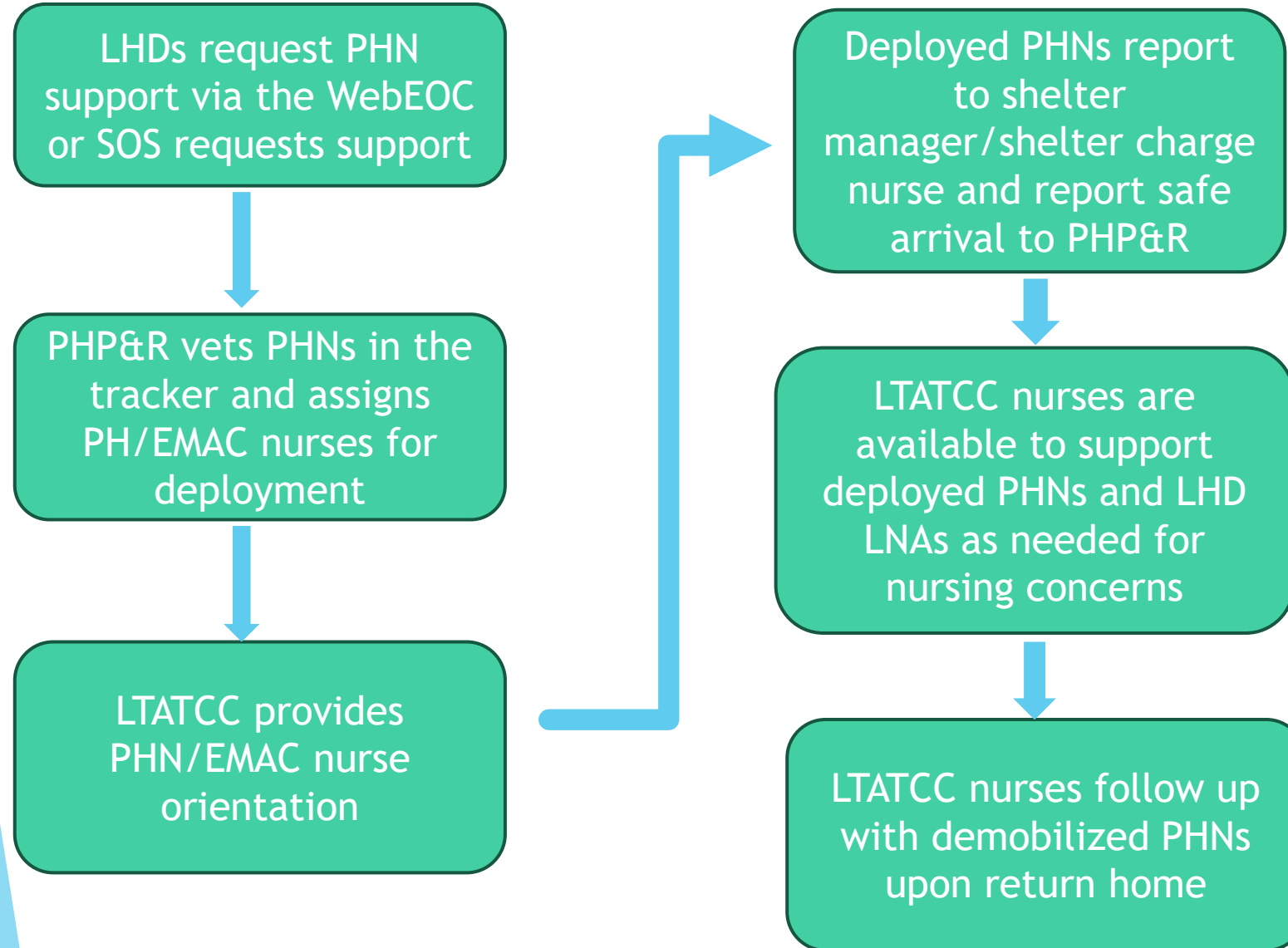
Public Health Nurse/EMAC
Nurse orientation, support,
demobilization follow up

Lead Nurse Administrator
status-check process

LTATCC and PHP&R: Activation and preparation prior to an incident



PHP&R/LTATCC Deployment Collaboration



Lead Nurse Administrator and LTATCC Check-In Process

- ▶ LTATCC nurse consultants will contact LNAs when the LTATCC receives notification that a local general population shelter has opened.
 - ▶ Provide resources, technical assistance and consultation to support the PHN emergency preparedness and mass care sheltering work in LHDs.
 - ▶ Provide resources, technical assistance and consultation to support public health clinical nursing services during mass care sheltering.
 - ▶ Obtain brief shelter situation reports

Requesting surge staff PHN support for General Population Shelters via the WebEOC

- ▶ Start date and approximate demobilization date
- ▶ Number of PHNs being requested per shift
- ▶ Shelter location, shift operations (8hr., 12 hr., etc.)
- ▶ Name of shelter point of contact, shelter manager and lead nurse administrator
- ▶ Current shelter status (lodging, meals, accessibility, census, etc.)
- ▶ Do the PHNs need supplies not listed on the PHN Shelter Deployment Packing Checklist?
- ▶ Will your agency provide lodging and meals?

Public Health Nurse Deployment Orientation Topics

- ▶ County/Shelter/LTATCC/PHP&R Contacts
- ▶ Shelter PHN Job Description
- ▶ PHN Shelter Deployment Packing Checklist
- ▶ Review of additional OCPHN disaster/shelter resources
- ▶ American Red Cross (ARC) Online Disaster and Sheltering Trainings List
- ▶ Event specific details (lodging, meals, travel, etc.)

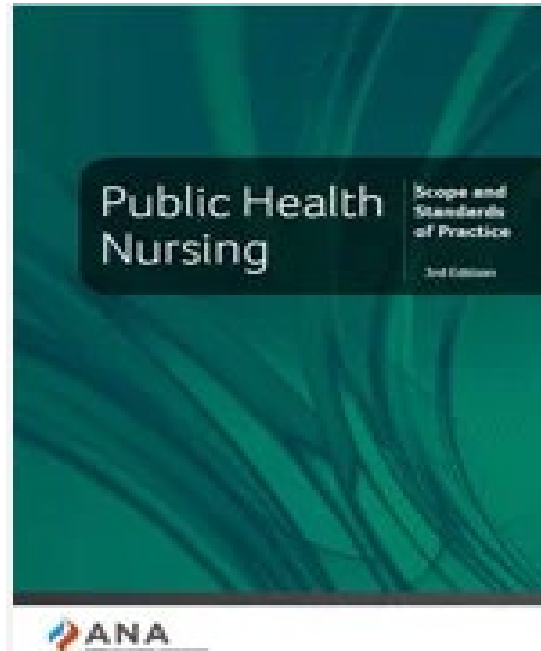
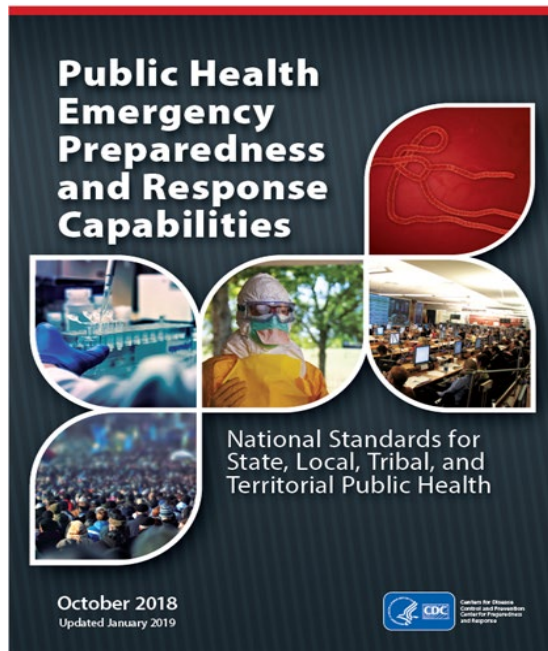
Resources for Lead Nurse Administrators and Public Health Nurses

- ▶ [Disaster/Shelter Resource](#) page on the [OCPHN](#) website:
 - ✓ [Guidance for Shelters on Communicable Disease Reporting](#)
 - ✓ [FEMA and American Red Cross \(ARC\) Shelter Field Guide](#)
 - ✓ [American Red Cross Shelter Forms](#)
 - ✓ [Shelter Health and Medical Support Models](#)
 - ✓ [Shelter Public Health Nurse Job Description](#)
 - ✓ [Health and Safety Precautions for Mass Care Services and Shelters](#)
 - ✓ [Public Health Nurse Shelter Deployment Packing Checklist](#)
 - ✓ [American Red Cross \(ARC\) Online Disaster and Sheltering Trainings List](#)
- ▶ [Disaster Health Core Curriculum](#) is a free, online course intended to introduce healthcare professionals to a diverse and comprehensive array of disaster medicine topics.

Resources for Public Health Nurses

Coming soon:

APHN Emergency Preparedness and Response Toolkit



Questions?

Jenifer Simone

Jenifer.Simone@dhhs.nc.gov

Cell: (984) 220- 6709