

NC DEPARTMENT OF  
**HEALTH AND HUMAN SERVICES**  
Division of Public Health  
Office of the Chief Public Health Nurse

# LTAT Command Center and Public Health Nursing Preparedness and Response for Public Health Nurses

Jenifer Simone, MSN, RN, CPHN, NCSN

Lead Nurse Public Health Preparedness and Response

June 2025

# Learning outcomes

- ▶ Public health nurses will gain enhanced knowledge to:
  - ▶ Describe disaster response roles for public health nurses working in general population shelters
  - ▶ Describe shelter types and shelter health models
  - ▶ Describe support provided by the Local Technical Assistance and Training Branch Command Center (LTATCC) in partnership with NC Public Health Preparedness and Response (PHP&R)
  - ▶ Describe associated job tools, related training and available resources.

# Agenda

- ▶ Common terms used in Public Health Preparedness and Response
- ▶ Public health nurse roles when working in general population shelters
- ▶ Shelter types and shelter health models
- ▶ Division level support and the Local Technical Assistance and Training Branch Command Center (LTATCC)
- ▶ Resources for training and professional development

# PHPR Terms and Definitions

- **EMAC Nurse** - Emergency Management Assistance Compact Nurse. EMAC Nurses can be out-of-state nurses or in-state PHNs deploying to work in disaster shelters
- **Emergency Operations Center**- A protected site from which government officials and emergency response personnel exercise direction and control in an emergency.
- **Event** - Planned event with potential risk to the public's health. Ex. US Open and heat-related illness, political party national convention during a pandemic
- **Incident** - Unplanned event with risk for public health or mass fatality impact. Ex. Pandemic, flooding, hurricane, tornado, nuclear meltdown.
- **Incident Management Team(s) (IMT)** - State teams made up of people with special qualifications and deployed to counties or localities to assist with response to emergencies/disasters.
- **LTATCC** - Local Technical Assistance and Training (Branch) Command Center
- **PHCC** - Public Health Command Center
- **PHNC** - Public Health Nurse Consultant - DPH and DCFW Nurse Consultants
- **PHP&R** - Public Health Preparedness and Response Branch (DPH)
- **Shelter Manager** - An individual who provides for internal organization, administration, and operation of a shelter facility.

# Public Health Nursing Eight Roles and Functions



NORTH CAROLINA  
Credentialed  
Public Health Nurse



NC DEPARTMENT OF  
HEALTH AND HUMAN SERVICES  
Division of Public Health

# Shelter Health Support Models in General Population Shelters

---

Nurse Support Model

---

EMS Support Model

---

Hybrid Support Model

# Public Health Nurse Roles in Disaster Sheltering



Function as critical part of shelter operations management



Surveil for illness and communicable disease



Assess and triage shelter resident population



Implement infection control, quarantine, and isolation of suspected illness



Use critical thinking, nursing process, and crisis management skills



Provide case management for shelter resident population



Use innovative design to fill resource gaps and safeguard a healthy population



Support and maintain shelter residents' whole health

# LTATCC Response Plan and Model Overview

LTAT Command Center

Public Health Nurse/EMAC  
Nurse orientation, support,  
demobilization follow up

Lead Nurse Administrator  
status-check process

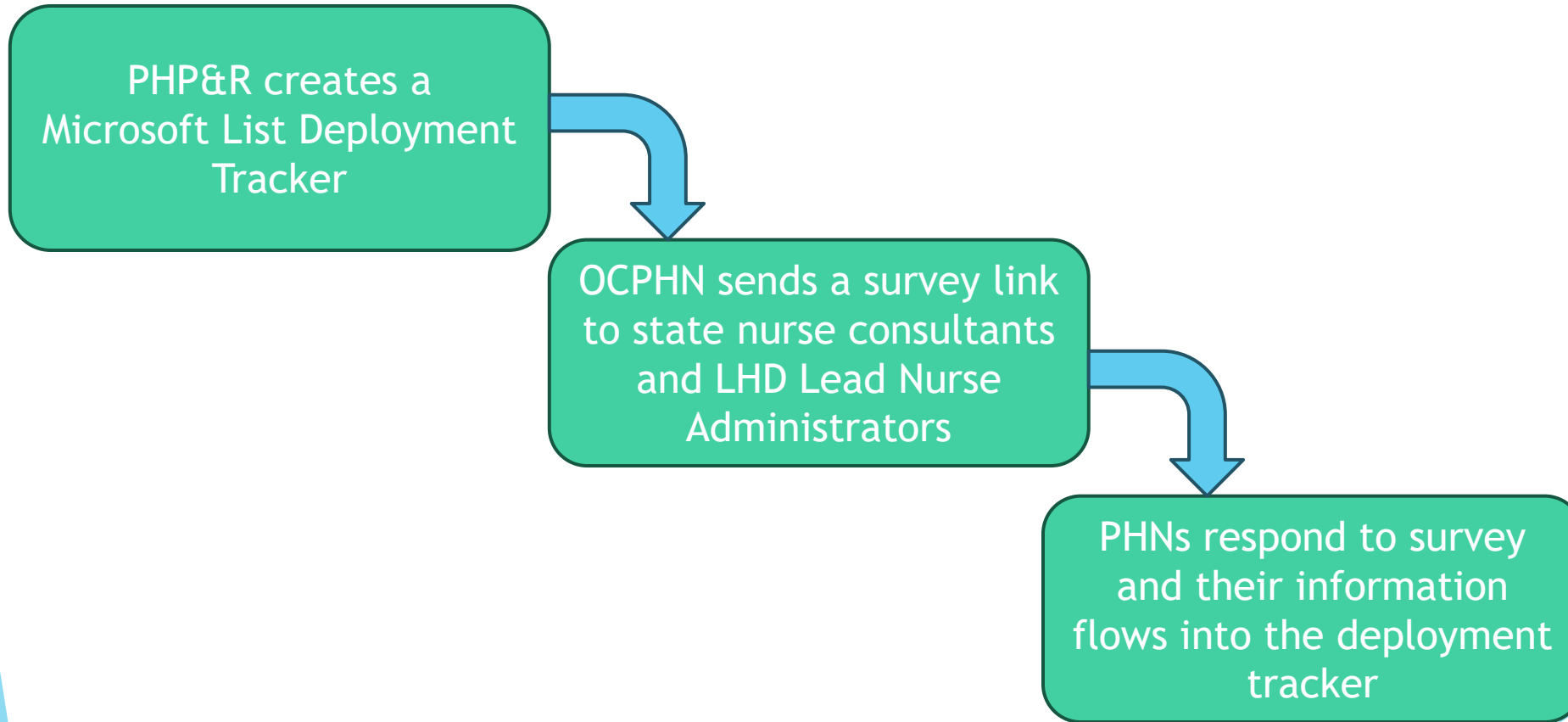


# Shelters supported by PHP&R and the LTATCC

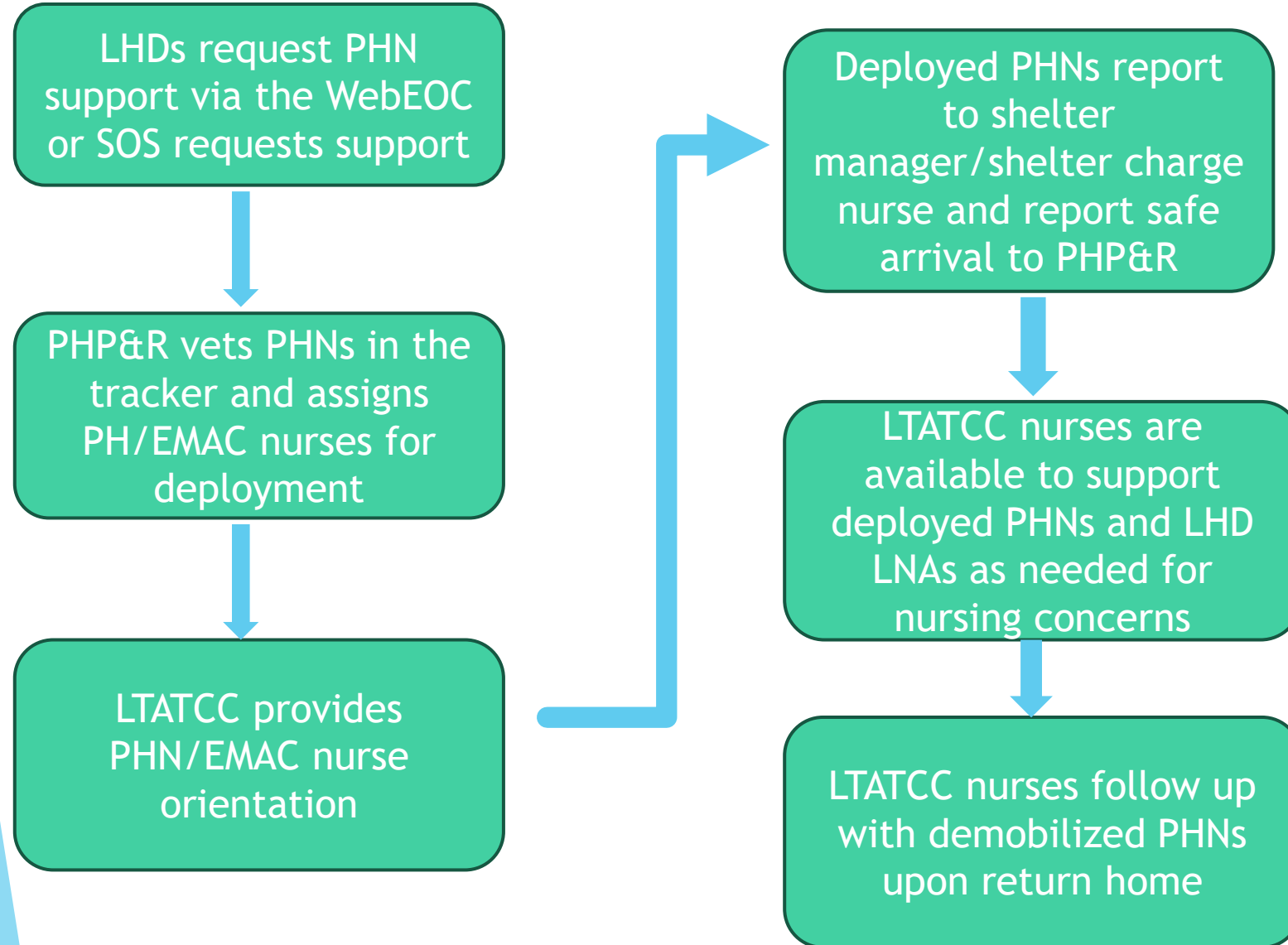
Local Health Department General  
Population Shelters

State Operated General Population  
Shelters

# LTATCC and PHP&R: Activation and preparation prior to an incident



# PHP&R/LTATCC Deployment Collaboration



# Public Health Nurse Deployment Orientation Topics

- ▶ County/Shelter/LTATCC/PHP&R Contacts
- ▶ Shelter PHN Job Description
- ▶ PHN Shelter Deployment Packing Checklist
- ▶ Review of additional OCPHN disaster/shelter resources
- ▶ American Red Cross (ARC) Online Disaster and Sheltering Trainings List
- ▶ Event specific details (lodging, meals, travel, etc.)

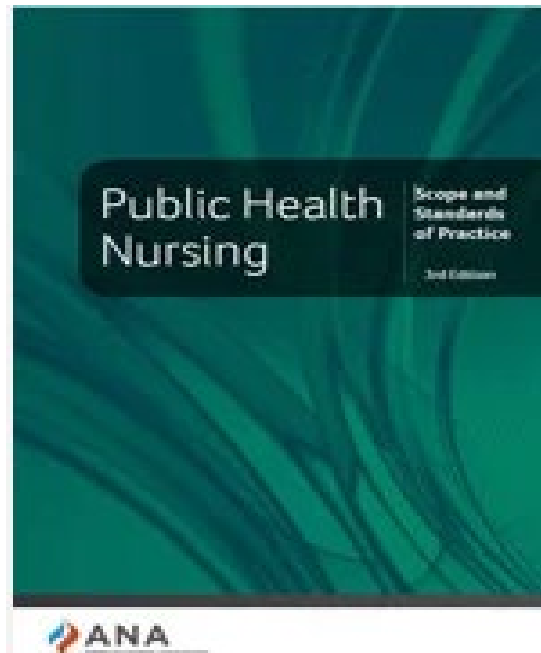
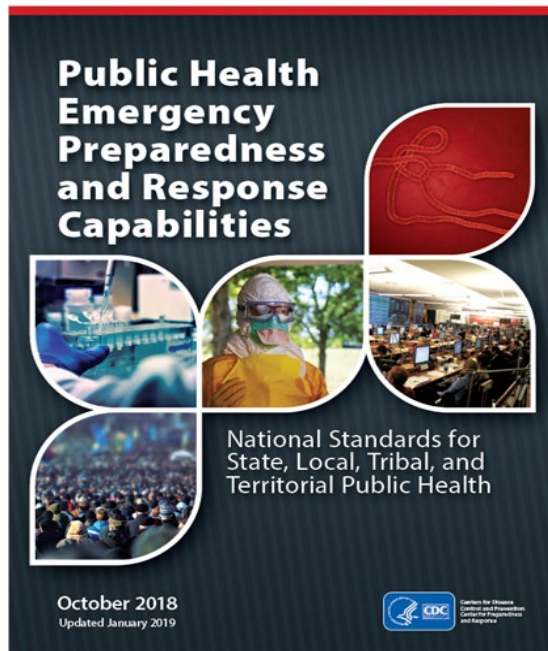
# Resources for Public Health Nurses

- ▶ [Disaster/Shelter Resource](#) page on the [OCPHN](#) website:
  - ✓ [Guidance for Shelters on Communicable Disease Reporting](#)
  - ✓ [FEMA and American Red Cross \(ARC\) Shelter Field Guide](#)
  - ✓ [American Red Cross Shelter Forms](#)
  - ✓ [Shelter Health and Medical Support Models](#)
  - ✓ [Shelter Public Health Nurse Job Description](#)
  - ✓ [Health and Safety Precautions for Mass Care Services and Shelters](#)
  - ✓ [Public Health Nurse Shelter Deployment Packing Checklist](#)
  - ✓ [American Red Cross \(ARC\) Online Disaster and Sheltering Trainings List](#)
- ▶ [Disaster Health Core Curriculum](#) is a free, online course intended to introduce healthcare professionals to a diverse and comprehensive array of disaster medicine topics.

# Resources for Public Health Nurses

Coming soon:

*APHN Emergency Preparedness and Response Toolkit*



# Questions?

Jenifer Simone

[Jenifer.Simone@dhhs.nc.gov](mailto:Jenifer.Simone@dhhs.nc.gov)

Cell: (984) 220- 6709